

FishPro™ Trophy 170

The most advanced sport fishing personal watercraft on the water.

KEY FEATURES

- Rotax® 1630 ACE™ – 170
- ST3 Hull™
- iDF – Intelligent Debris-Free Pump System
- Garmin® 7" touchscreen GPS & fish finder
- Advanced battery system
- Modular swivel seat
- Rear Deck Extension with LinQ
- Quick-connect livewell
- LinQ fishing cooler (51 L)
- Anchoring system
- Tech Package: BRP Audio – Premium System, full color 7.8" wide display and USB port



Shark Grey and Orange Crush

CAPACITY

Rider Capacity	3
Weight Capacity	272 kg
Rear Platform Capacity (without passenger)	100 kg
Fuel Capacity	70 L
Glove Box	2.9 L
Front Bin	96 L
LinQ Fishing Cooler	51 L
Storage Capacity – Total	149.9 L

DIMENSIONS

Length (bumper to bumper)	373 cm
Width	125 cm
Height (pedestal seat uninstalled)	115 cm

HULL

Type	ST3 Hull™
Material	Fiberglass

OTHER FEATURES

- Ergolock two-piece Explorer Touring seat w/ modular swivel seat
- Seat strap
- iBR® – Intelligent Brake & Reverse
- VTS™ – Variable Trim System
- Boarding ladder
- RF D.E.S.S.® key**
- Direct-access front storage
- Storage bin organizer
- Watertight phone compartment
- Two sets of LinQ attachment points
- Wide-angle mirrors
- Handle grips with palm rest
- Footwell carpets
- Large swim platform
- 5 fishing rod holders
- Angled gunwale footrests
- 2 LinQ front supports
- Cup holder
- USB port
- Tilt steering
- Ski tow eye

ROTAX® ENGINE

	1630 ACE™ ' 170
Intake System	Naturally aspirated
Displacement	1,630 cc
Cooling	Closed-Loop Cooling System (CLCS)
Reverse System	Electronic iBR®
Fuel Type	95 octane
Throttle System	ITC™ (Intelligent Throttle Control)
Exhaust System	D-Sea-Bel™ system

GAUGE

Type of Gauge	Large panoramic 7.8" wide LCD display
Main Functions	<ul style="list-style-type: none">• BRP Connect• Music• Weather• Bluetooth® connectivity• Speedometer• RPM• Sport mode• ECO® mode <ul style="list-style-type: none">• Clock• VTS™• Fuel consumption• Fuel autonomy• Water temperature• Speed statistics• Vehicle hours• Trolling mode (slow mode)• Speed regulator
iTC System – Mode	

WEIGHT

Dry Weight	416 kg
------------	--------

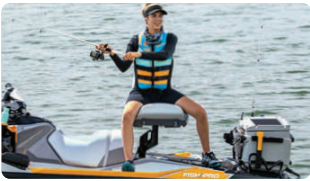
WARRANTY

BRP limited warranty covers the watercraft for two years.

**Electronic brake, neutral and reverse.

FISHPRO™ TROPHY 170

FEATURE HIGHLIGHTS



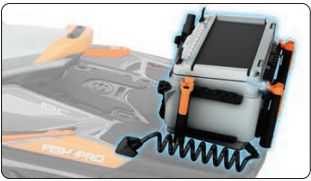
Modular Swivel Seat

Installs in seconds for a game-changing experience. Both the pedestal and backrest stow cleverly away when not in use.



Garmin® 7" GPS & Fish Finder

A top-of-the-line navigation, charting and fish-finding system using an in-hull transducer and mid-CHIRP sonar. Includes token for access to free upgraded regional maps.



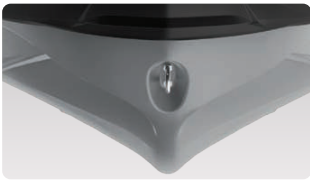
Quick-Connect Livewell

Turn the LinQ Fishing Cooler into a livewell in seconds. An integrated pump constantly feeds fresh water into the reservoir keeping your catch or your bait alive all day.



Rotax® 1630 ACE™ – 170 Engine

The Rotax® 1630 ACE™ – 170 combines plenty of naturally aspirated power and economy, meaning the adventure can be exhilarating and prolonged.



ST3 Hull™

An innovative hull that sets the benchmark for rough water handling, stability, and offshore performance.



Full-Color 7.8" Wide Display

Full-color display with incredible visibility and a new level of functionality. Bluetooth® and smartphone app integration provides music, weather, navigation and more.