

Explorer Pro® 170/230

The ultimate companion
for any adventure.

WHAT'S NEW

- ROTAX® 1630 ACE™ – 230 engine available

KEY FEATURES

- Rotax 1630 ACE™ – 170/230
- ST3 Hull™
- Tech Package: BRP Audio – Premium System, full color 7.8" wide display and USB port
- iDF – Intelligent Debris-Free Pump System
- Garmin® 7" touchscreen GPS & fish finder
- Touring windshield
- Heavy duty front bumper
- Adjustable handlebar riser
- Explorer touring seat and knee pads
- Gunwale footrests
- LinQ® Multi Cargo Rack
- LinQ Explorer Bag

CAPACITY

| | |
|--|---------|
| Rider Capacity | 888 |
| Weight Capacity | 272 kg |
| Rear Platform Capacity (without passenger) | 100 kg |
| Fuel Capacity | 70 L |
| Glove Box | 2.9 L |
| Front Bin | 96 L |
| LinQ Explorer Bag | 100 L |
| Storage Capacity – Total | 198.9 L |

DIMENSIONS

| | |
|---------------------------|----------|
| Length (bumper to bumper) | 373.4 cm |
| Width | 125.5 cm |
| Height | 140 cm |

HULL

| | |
|----------|------------|
| Type | ST3 Hull™ |
| Material | Fiberglass |

OTHER FEATURES

- Ergolock™ two-piece Explorer Touring seat
- Seat strap
- iBR – Intelligent Brake & Reverse
- VTS™ (Variable Trim System)
- Boarding ladder
- RF D.E.S.® key**
- Direct-access front storage
- Watertight phone compartment
- LinQ attachment system
- Knee pads
- Wide-angle mirrors
- Handle grips with palm rest
- Footwell carpets
- Large swim platform
- Angled gunwale footrests
- 1 LinQ front support
- Cup holder
- Tilt steering
- Ski tow eye



● Iceland Grey

ROTAX® ENGINE

| | 1630 ACE™ ' 170 | 1630 ACE™ ' 230 |
|-----------------|-------------------------------------|--|
| Intake System | Naturally aspirated | Supercharged with external intercooler |
| Displacement | 1,630 cc | |
| Cooling | Closed-Loop Cooling System (CLCS) | |
| Reverse System | Electronic iBR® | |
| Fuel Type | 95 octane | |
| Throttle System | iTC™ (Intelligent Throttle Control) | |
| Exhaust System | D-Sea-Be!™ system | |

GAUGE

| Type of Gauge | Large panoramic 7.8" wide LCD display | |
|-------------------|---------------------------------------|---------------------|
| Main Functions | • BRP Connect | • VTS™ |
| | • Music | • Fuel consumption |
| | • Weather | • Fuel autonomy |
| | • Bluetooth connectability | • Water temperature |
| | • Speedometer | • Speed statistics |
| | • RPM | • Vehicle hours |
| | • Clock | |
| | • Sport mode | • Slow mode |
| iTC System – Mode | • ECO® mode | • Speed regulator |

WEIGHT

| | | |
|------------|--------|--------|
| Dry Weight | 399 kg | 416 kg |
|------------|--------|--------|

WARRANTY

BRP limited warranty covers the watercraft for two years.

*Electronic brake, neutral and reverse.
**May not be available at time of purchase. Please check with your dealer.

EXPLORER PRO170/230

FEATURE HIGHLIGHTS



Touring Windshield

An industry-first that reduces fatigue and noise associated with prolonged wind pressure while also protecting against splashing and salt water exposure when riding offshore.



Extended Riding Comfort

With extended riding duration in mind, the new Explorer Touring seat and knee pads, adjustable riser handlebars and gunwale footrests provide ultimate extended riding comfort.



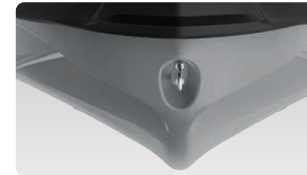
LinQ Explorer Bag

Keep extra gear dry and easily accessible with this 100 L bag. This exclusive LinQ compatible accessory is waterproof, functional and portable. It can be stacked on the LinQ plate/LinQ accessories or carried as a backpack.



ROTAX® 1630 ACE™ – 170 / 230 Engines

Two powerful engines offering with the Rotax® 1630 ACE engine – the 125 kW (170 hp) boasts naturally aspirated punch with optimal fuel economy, or opt for the 169.16 kW (230 hp) engine with a supercharger and external intercooler, optimized to run on regular fuel.



ST3 Hull™

An innovative hull that sets the benchmark for rough water handling, stability, and offshore performance.



Rear Deck Extension With Second LinQ Attachment System

Adds 11.5 inches to the back of the watercraft to increase stability, space, and storage capability.