

YACHTING EXCELLENCE SINCE 1974

solaris*power*

DAL 1974 PER CHI NAVIGA



SOLARIS POWER

THE QUALITY OF SOLARIS SAILING
YACHTS NOW IN POWER BOATS



FOR OVER 45 YEARS SOLARIS HAS BUILT LARGE
HIGH QUALITY YACHTS THAT SAIL IN ALL THE SEAS
AND OCEANS OF THE WORLD

SOLARIS: SINCE 1974
QUALITY, SEAWORTHINESS
AND ELEGANCE



The boatyard’s reputation, founded in Aquileia 45 years ago, is better known among German, Swiss and Austrian yachtsmen than it is in Italy. Right from the beginning, the company’s philosophy has been the building seaworthy, solid and secure sailing boats to the highest quality standards, capable of challenging the prestigious Scandinavian and Dutch yacht builders. Fittingly, Solaris claims that our yachts are also: “Built for mariners”. Its volume and revenues increased fivefold in just a few years and

today it is the European leader in the category of top-class sailing boats from 50’ to 110’. There are not many boatyards left today, who can combine leading-edge technology with traditional craftsmanship of detail and finishing as Solaris Yachts does. Since 2008 Solaris also operates a production unit dedicated to motoryachts from 44’ to 100’, including five 90’ luxury displacement motoryachts for an internationally renowned brand. This facility is now the builder of the new Solaris Power range, to the same exacting quality standards of Solaris sailboats.

TRADITIONAL CRAFTSMANSHIP

There are not many boatyards left today, that can combine leading-edge technology with traditional craftsmanship of details and finishing as Solaris Yachts does.



THE LOBSTER BOAT HERITAGE

Solaris was among the first in Europe to build a lobster boat, the 47-foot Express Cruiser, by Bruce King, designer of the famous American Hinckley line.



THE GREAT SEAGOING CAPABILITIES OF SOLARIS POWER

SMOOTH SAILING THROUGH THE WAVES AND A DRY DECK IN CHOPPY SEAS

The sharp shape of the bow and the pronounced flare, softens the passage through the waves and keeps the deck dry.

GREAT STABILITY WHILE CRUISING AND AT ANCHOR

The hull shape guarantees great stability and comfort when cruising and at anchor, without the need for stabilizers.



LOW FUEL CONSUMPTION RESULTING IN EXCELLENT RANGE

The advanced studies on the shapes of the hull, ensure low fuel consumption, resulting in excellent range and reduced CO₂ emissions. One example, the 48 Open at a cruising speed of 26 knots only needs 4.8 litres per mile.

EFFICIENT CRUISING BOTH IN DISPLACEMENT AND IN PLANING MODE

Unlike ordinary boats with planing hulls, Solaris Power are capable to cruise steadily and without roll even in displacement mode from 10 to 14 knots.



THE LATEST PROPULSION TECHNOLOGY

Solaris Power yachts feature cutting-edge propulsion working in synergy with the shape of the hull. This is the outcome of intense collaboration between Victory Design and Volvo Penta. Since 2005 Brunello Acampora has been studying shapes that are optimised for the

IPS, including 'azimuth pods' for planing hulls; having found they generate huge performance improvements. Moreover, the compactness of the propulsion apparatus yields a noticeable increase of living space: the interiors of these boats compare favourably with much bigger

yachts, and make the tender easy to stow, launch and haul.



EASY DOCKING THANKS TO THE JOYSTICK

Docking manoeuvres are simplified thanks to the joystick and the azimuth pods, even with a single person at the controls.



LOW NOISE LEVEL AND ZERO VIBRATIONS

The absence of the rotating masses of the shaft line and the engine exhausts in the propeller pods ensure absence of vibrations and low noise.

SPACIOUS AND WELL VENTILATED ENGINE ROOM

Offering easy access to the engine itself and to the other systems.



INNOVATIONS FOR MORE ON-BOARD COMFORT

WALKAROUND

The decks of all models include lateral walkways that afford easy and safe movement from bow to stern.



FOLD-OUT BULWARKS

These can be opened for enhanced enjoyment of the cockpit, increasing its surface by 20%.



VERY LARGE SUNBEDS

All Solaris Power have the bow sundeck. Open models also offer an aft sundeck.



HYDRAULIC GANGWAY

The hydraulic gangway turns into a comfortable swim ladder.



TENDER GARAGE

Under the aft opening sundeck there is a large garage that can be used for the tender and various water toys.



LAYOUT IN MULTIPLE VERSIONS

The internal and external layouts are available in several versions to suit the tastes and needs of owners.





SOLARIS POWER RANGE

40

OPEN P. 10

40^{GF}

OPEN P. 20

44

OPEN P. 26

48

OPEN P. 32

LOBSTER P. 54

FLYBRIDGE P. 78

52

OPEN P. 42

COUPÉ P. 62

57

LOBSTER P. 66

FLYBRIDGE P. 86

60

OPEN P. 48

40

NEW SOLARIS POWER 40

SETS NEW STANDARDS
FOR THE CATEGORY, BOASTING LAYOUT
AND VOLUMES OF A 43 FOOTER.

O
P
E
N

- 10 -











MAIN DECK



LOWER DECK

Version A



LOWER DECK

Version B



40 OPEN

TECHNICAL SPECIFICATIONS

LENGTH OVERALL	11,97 m / 39'27"
WATER LINE LENGTH	10,62 m / 34'85"
BEAM	3,85 m / 12'63"
DRAFT	0,73 m / 2'4"
APPROX. LIGHT DISPLACEMENT	8231 kg / 18,146 lbs - Petrol engine 9040 kg / 19,929 lbs - Diesel engine
APPROX. LOAD DISPLACEMENT	9324 kg / 20,555 lbs - Petrol engine 10130 kg / 22,332 lbs - Diesel engine
FUEL CAPACITY	1.000 L / 220 US gal
WATER CAPACITY	250.L / 60 US gal
PETROL ENGINES	2 x Volvo Penta V6 280 209 kW / 280 hp 5800 rpm 2 x Volvo Penta D4 300 221 kW / 300 hp 3500 rpm
DIESEL ENGINES (OPTIONAL)	2 x Volvo Penta D6 380 280 kW / 435 hp 3500 rpm 2 x Volvo Penta D6 440 324 kW / 480 hp 3800 rpm
MAX SPEED	31 kn - V6 280 30 kn - D4 300 33 kn - D6 380 41 kn - D6 440
CRUISING SPEED	21 kn - V6 280 20 kn - D4 300 23 kn - D6 380 27 kn - D6 440
CABINS	1 (+1 optional)
BATHROOMS	1
MAX PERSONS CAPACITY	12
DESIGN	Brunello Acampora / Victory Design Solaris Power Design Team

40

NEW 40F OPEN OUTBOARD

SETS NEW STANDARDS FOR THE CATEGORY,
BOASTING LAYOUT AND VOLUMES OF A
43-FOOTER.

O
P
E
N



40





MAIN DECK



LOWER DECK

Version A



LOWER DECK

Version B



40' OPEN

TECHNICAL SPECIFICATIONS

LENGTH OVERALL	11,97 m / 39'27"
WATER LINE LENGTH	11,80 m / 38'71"
BEAM	3,85 m / 12'63"
DRAFT	0,73 m / 2'4"
APPROX. LIGHT DISPLACEMENT	8.231 kg / 18,146 lbs
APPROX. LOAD DISPLACEMENT	9.324 kg / 20,555 lbs
FUEL CAPACITY	1.000 L / 220 US gal
WATER CAPACITY	200.L / 44 US gal
PETROL ENGINES	2 x Mercury Verado 350 257 kW / 350 hp 6.400 rpm
PETROL ENGINES (OPTIONAL)	2 x Mercury Verado 450R 335 kW / 450 hp 6.400 rpm
MAX SPEED	35 kn - Mercury Verado 350 41 kn - Mercury Verado 450
CRUISING SPEED	25 kn - Mercury Verado 350 30 kn - Mercury Verado 450
CABINS	1 (+1 opzionale)
BATHROOMS	1
MAX PERSONS CAPACITY	12
DESIGN	Brunello Acampora / Victory Design Solaris Power Design Team

44

SOLARIS POWER 44

ALL THE SEAWORTHY FEATURES OF THE
SOLARIS POWER RANGE WITH THE LARGEST
LIVING AREA IN THE CATEGORY.
NEVER BEFORE HAS A 44-FOOTER
OFFERED SO MUCH.

O
P
E
N



44





MAIN DECK

Optional Fold-out Bulwarks



LOWER DECK

Version A



LOWER DECK

Version B



LOWER DECK

Version C



44 OPEN

TECHNICAL SPECIFICATIONS

LENGTH OVERALL	13,47 m / 44'18"
WATER LINE LENGTH	11,95 m / 39'20"
BEAM	4,35 m / 14'27"
DRAFT	1,03 m / 3'37"
APPROX. LIGHT DISPLACEMENT	11.500 kg / 25,353 lbs
APPROX. LOAD DISPLACEMENT	14.000 kg / 30,864 lbs
FUEL CAPACITY	1.200 L / 317 US gal
WATER CAPACITY	330 L / 87 US gal
ENGINES	2 x Volvo Penta D6 IPS 500 272 kW / 370 hp 3500 rpm 2 x Volvo Penta D6 IPS 600 320 kW / 435 hp 3500 rpm 2 x Volvo Penta D6 IPS 650 353 kW / 480 hp 3800 rpm
MAX SPEED	33 kn - IPS 500 36,5 kn - IPS 600 39 kn - IPS 650
CRUISING SPEED	22 kn - IPS 500 25 kn - IPS 600 26,5 kn - IPS 650
CABINS	2
BATHROOMS	1
MAX PERSONS CAPACITY	12
DESIGN	Brunello Acampora / Victory Design Solaris Power Design Team

48

EUROPEAN YACHT OF THE YEAR 2020

FLARED BOW FOR SMOOTH SAILING
THROUGH THE WAVES. GREAT STABILITY
WHILE CRUISING AND AT ANCHOR.
THE ONLY OPEN BOAT WITH A TRUE
WALKAROUND DECK, FEATURING THE SAME
CABIN SPACE OF A CONVENTIONAL CABIN
CRUISER.

O
P
E
N

48









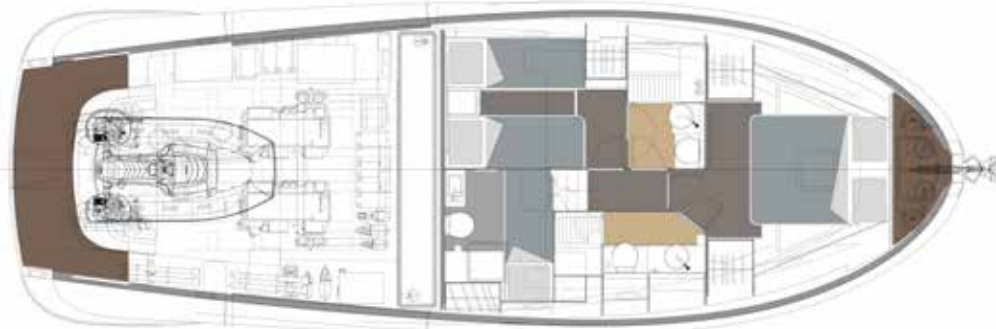


MAIN DECK



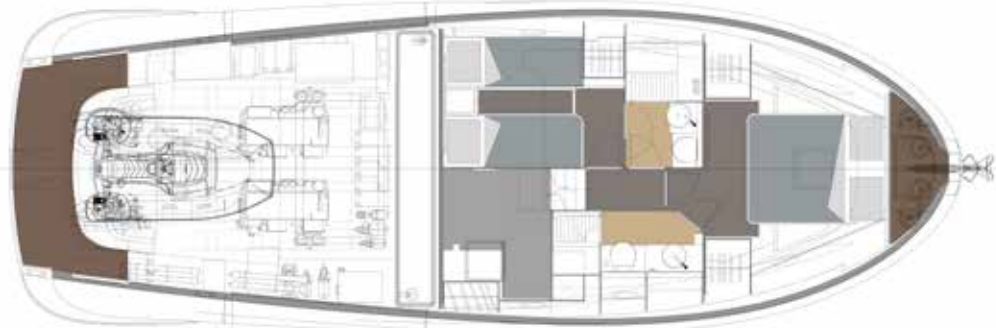
LOWER DECK

Version A



LOWER DECK

Version B



LOWER DECK

Version C



48 OPEN

TECHNICAL SPECIFICATIONS

LENGTH OVERALL	14,86 m / 48'74"
WATER LINE LENGTH	13,40 m / 43'95"
BEAM	4,87 m / 15'97"
DRAFT	1,05 m / 3'44"
APPROX. LIGHT DISPLACEMENT	14.000 kg / 30,864 lbs
APPROX. LOAD DISPLACEMENT	16,800 kg / 37,037 lbs
FUEL CAPACITY	1.500 L / 396 US gal
WATER CAPACITY	430 L / 114 US gal
ENGINES	2 x Volvo Penta D6 IPS 600 320 kW / 435 hp 3500 rpm 2 x Volvo Penta D6 IPS 650 353 kW / 480 hp 3800 rpm
MAX SPEED	34 kn 36 kn
CRUISING SPEED	23 kn 26 kn
CABINS	1/2
BATHROOMS	1 + 1
MAX PERSONS CAPACITY	12
DESIGN	Brunello Acampora / Victory Design Cav. Norberto Ferretti Solaris Power Design Team

52

THE NEW 52 OPEN

SOLARIS 52' BOASTS LAYOUT AND
VOLUMES AT THE TOP OF THE CATEGORY
CONFIRMS THE GREAT SEAGOING
CAPABILITIES AND THE UNMISTAKABLE
ELEGANCE.

O
P
E
N

52





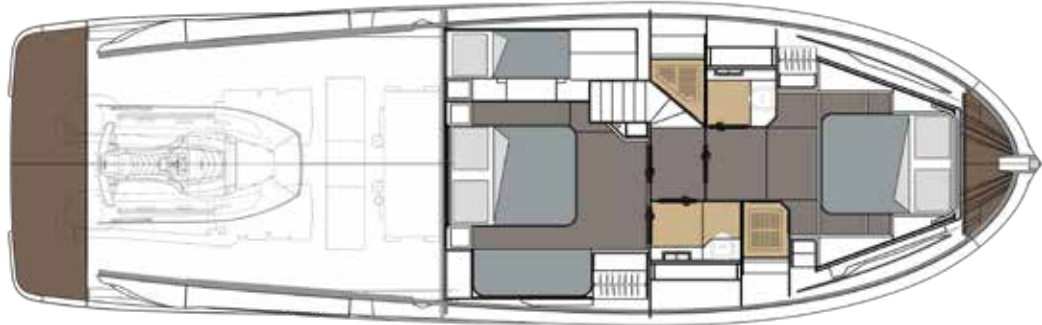


MAIN DECK



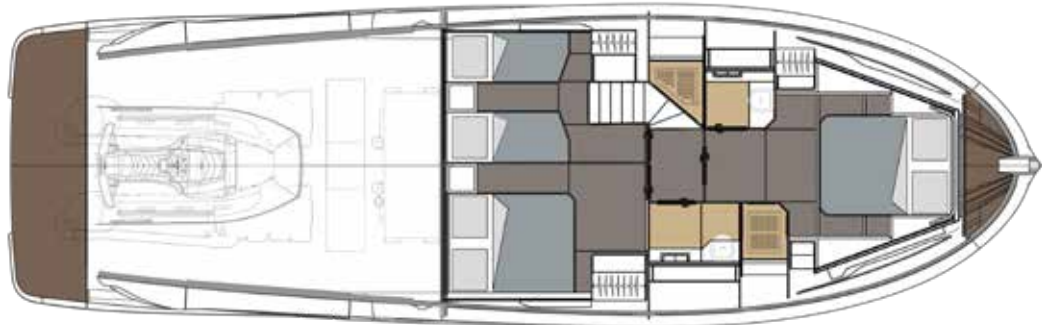
LOWER DECK

Version A (standard)



LOWER DECK

Version B (optional)



52 OPEN

TECHNICAL SPECIFICATIONS

LENGTH OVERALL	16,2 m / 53'
WATER LINE LENGTH	14,83 m / 48'65"
BEAM	4,95 m / 16'30"
DRAFT	1,19 m / 3'9"
APPROX. LIGHT DISPLACEMENT	17.700 kg / 39,022 lbs
APPROX. LOAD DISPLACEMENT	21.500 kg / 47,400 lbs
FUEL CAPACITY	2.000 L / 528 US gal
WATER CAPACITY	550 L / 145 US gal
ENGINES	2 x Volvo Penta D6-IPS650 353 kW / 480hp 3800 rpm Optional 2 x Volvo Penta D8-IPS800 441 kW / 600 hp 3000 rpm
MAX SPEED	30 kn - IPS 650 35 kn - IPS 800
CRUISING SPEED	24 kn - IPS 650 27 kn - IPS 800
CABINS	2 + 1 (optional)
BATHROOMS	2
MAX PERSONS CAPACITY	12
DESIGN	Brunello Acampora / Victory Design Solaris Power Design Team

60

COMING IN 2023

THE NEW WALKAROUND OPEN BOAT THAT
WILL REDEFINE THE STANDARDS OF THE
CATEGORY.

O
P
E
N

60

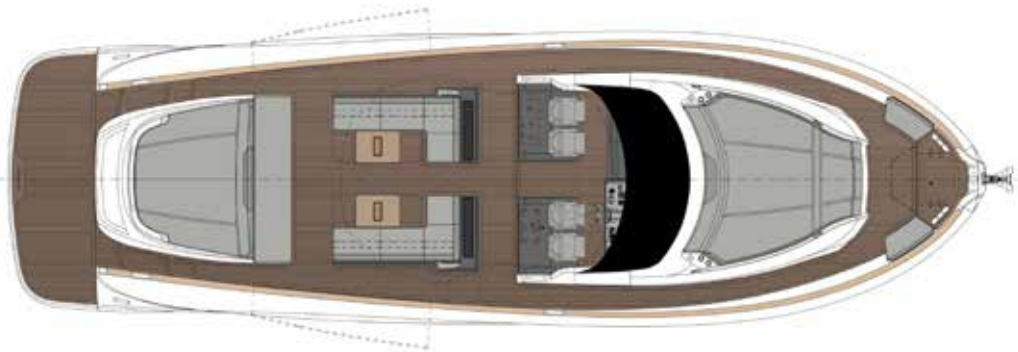




60



MAIN DECK



LOWER DECK

Version A (standard)



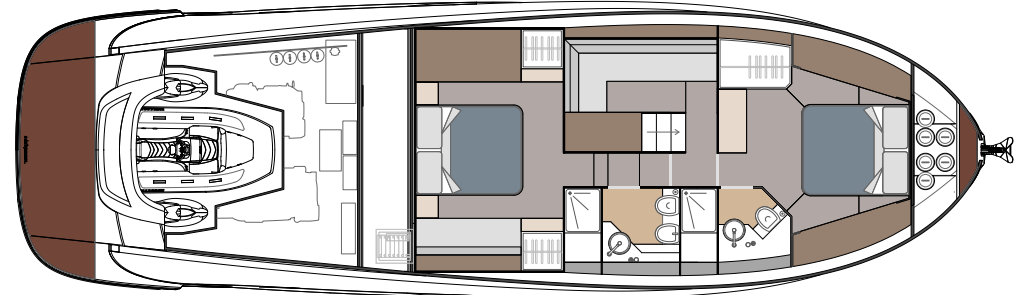
LOWER DECK

Version B (optional)



LOWER DECK

Version C (optional)



60 OPEN

TECHNICAL SPECIFICATIONS

LENGTH OVERALL	18,29 m / 60'
WATER LINE LENGTH	16,23 m / 53'24"
BEAM	5,35 m / 17'55"
DRAFT	0,85 m / 2'7"
APPROX. LIGHT DISPLACEMENT	23.000 kg / 50,706 lbs
APPROX. LOAD DISPLACEMENT	26.500 kg / 58,422 lbs
FUEL CAPACITY	3.000 L / 792 US gal
WATER CAPACITY	600 L / 159 US gal
ENGINES	2 x Volvo Penta D6 IPS 800 441 kW / 600 hp 3000 rpm Optional 2 x Volvo Penta D6 IPS 950 533 kW / 725 hp 2500 rpm 2 x Volvo Penta D13 IPS 1350 735 kW / 1000 hp 2400 rpm
MAX SPEED	30 kn - IPS 800 34 kn - IPS 950 39 kn - IPS 1350
CRUISING SPEED	25 kn - IPS 800 28 kn - IPS 950 30 kn - IPS 1350
CABINS	2 / 3
BATHROOMS	2
MAX PERSONS CAPACITY	12
DESIGN	Brunello Acampora / Victory Design Solaris Power Design Team

48

SOLARIS POWER 48 LOBSTER

A NEW TAKE ON THE TRADITIONAL
LOBSTER BOAT, WITH ALL ITS FEATURES
OF SEAWORTHINESS, FUNCTIONALITY AND
SAFETY.

L
O
B
S
T
E
R

48









MAIN DECK

Version A



MAIN DECK

Version B



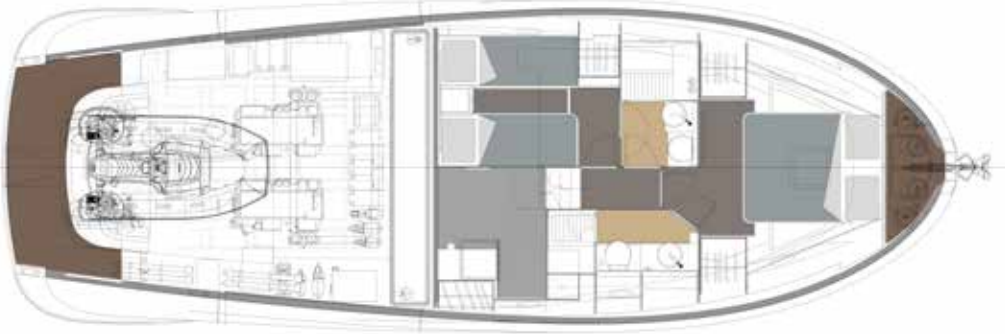
LOWER DECK

Version A



LOWER DECK

Version B



LOWER DECK

Version C



48 LOBSTER

TECHNICAL SPECIFICATIONS

LENGTH OVERALL	14,86 m / 48'74"
WATER LINE LENGTH	13,40 m / 43'95"
BEAM	4,87 m / 15'97"
DRAFT	1,05 m / 3'44"
APPROX. LIGHT DISPLACEMENT	14.750 kg / 32,518 lbs
APPROX. LOAD DISPLACEMENT	17.550 kg / 38,691 lbs
FUEL CAPACITY	1.500 L / 396 US gal
WATER CAPACITY	430 L / 114 US gal
ENGINES	2 x Volvo Penta D6 IPS 600 320 kW / 435 hp 3500 rpm 2 x Volvo Penta D6 IPS 650 353 kW / 480 hp 3800 rpm
MAX SPEED	28 kn - IPS 600 / 32 kn - IPS 650
CRUISING SPEED	20 kn - IPS 600 / 24 kn - IPS 650
CABINS	1/2
BATHROOMS	1 + 1
MAX PERSONS CAPACITY	12
DESIGN	Brunello Acampora / Victory Design Cav. Norberto Ferretti Solaris Power Design Team

52

THE NEW 52 COUPÉ

SOLARIS 52' BOASTS LAYOUT AND
VOLUMES AT THE TOP OF THE CATEGORY
CONFIRMS THE GREAT SEAGOING
CAPABILITIES AND THE UNMISTAKABLE
ELEGANCE.

C
O
U
P
É

52



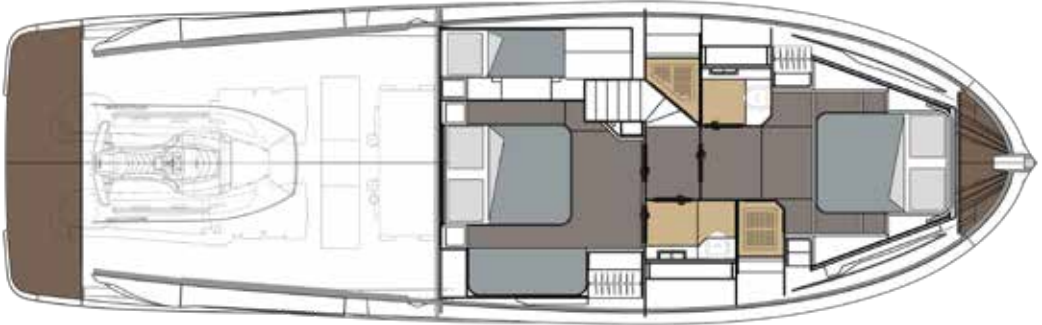


MAIN DECK



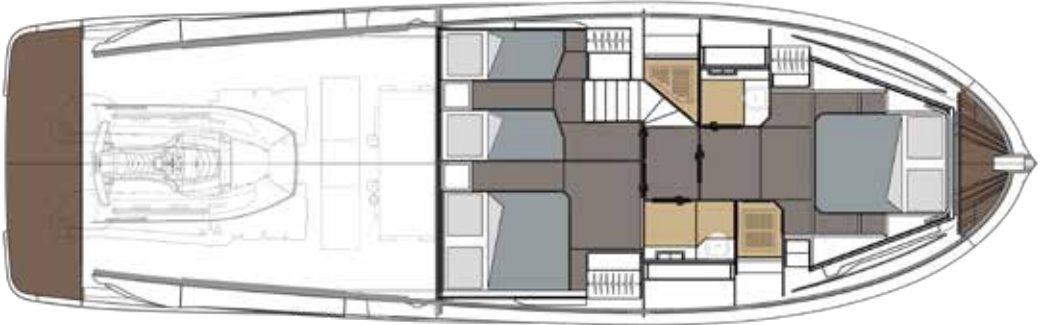
LOWER DECK

Version A (standard)



LOWER DECK

Version B (optional)



52 COUPÉ

TECHNICAL SPECIFICATIONS

LENGTH OVERALL	16,2 m / 53'
WATER LINE LENGTH	14,83 m / 48'65"
BEAM	4,95 m / 16'30"
DRAFT	1,25 m / 4'1"
APPROX. LIGHT DISPLACEMENT	19.200 kg / 42,330 lbs
APPROX. LOAD DISPLACEMENT	23.000 kg / 50,700 lbs
FUEL CAPACITY	2.000 L / 528 US gal
WATER CAPACITY	550 L / 145 US gal
ENGINES	2 x Volvo Penta D6-IPS650 353 kW / 480hp 3800 rpm Optional 2 x Volvo Penta D8-IPS800 441 kW / 600 hp 3000 rpm
MAX SPEED	28 kn - IPS 650 33 kn - IPS 800
CRUISING SPEED	22 kn - IPS 650 25 kn - IPS 800
CABINS	2 + 1 (optional)
BATHROOMS	2
MAX PERSONS CAPACITY	12
DESIGN	Brunello Acampora / Victory Design Solaris Power Design Team

57

NO BOAT MATCHES
THIS COMBINATION OF
FEATURES

THE ONLY LOBSTER BOAT FEATURING
WALKAROUND DECKS, HELMSMAN'S SIDE
DOOR AND FOLD-OUT BULWARKS.

L
O
B
S
T
E
R

57





57









MAIN DECK

Lower deck galley layout



MAIN DECK

Main deck galley layout



LOWER DECK

Version A



LOWER DECK

Version B



LOWER DECK

Version C



57 LOBSTER

TECHNICAL SPECIFICATIONS

LENGTH OVERALL	17,50 m / 57'40"
WATER LINE LENGTH	15,40 m / 50'52"
BEAM	5,28 m / 17'32"
DRAFT	1,29 m / 4'23"
APPROX. LIGHT DISPLACEMENT	23.000 kg / 50,706 lbs
APPROX. LOAD DISPLACEMENT	26.000 kg / 57,320 lbs
FUEL CAPACITY	2.200 L / 581 US gal
WATER CAPACITY	600 L / 159 US gal
ENGINES	2 x Volvo Penta D8 IPS 800 441 kW / 600 hp 3000 rpm 2 x Volvo Penta D11 IPS 950 533 kW / 725 hp 2500 rpm
MAX SPEED	30 kn - IPS 800 / 35 kn - IPS 950
CRUISING SPEED	23 kn - IPS 800 / 26 kn - IPS 950
CABINS	2 / 3 / 4
BATHROOMS	2
MAX PERSONS CAPACITY	12
DESIGN	Brunello Acampora / Victory Design Cav. Norberto Ferretti Solaris Power Design Team

48

SOLARIS POWER 48 FLYBRIDGE

THE VERSATILITY OF THE FLYBRIDGE
COMBINED WITH THE MARINE
PERFORMANCES OF THE SOLARIS POWER
LOBSTER.

F
L
Y
B
R
I
D
G
E

48







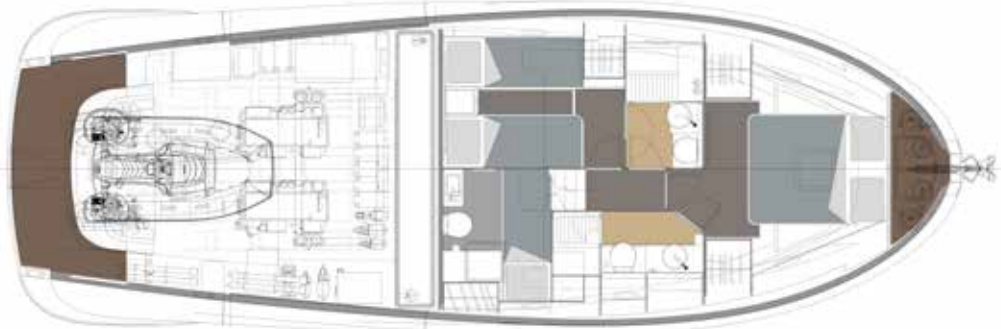


MAIN DECK



LOWER DECK

Version A



LOWER DECK

Version B



48 FLYBRIDGE

TECHNICAL SPECIFICATIONS

LENGTH OVERALL	14,86 m / 48'74"
WATER LINE LENGTH	13,40 m / 43'95"
BEAM	4,87 m / 15'97"
DRAFT	1,05 m / 3'44"
APPROX. LIGHT DISPLACEMENT	14.750 kg / 32,518 lbs
APPROX. LOAD DISPLACEMENT	17.550 kg / 38,691 lbs
FUEL CAPACITY	1.500 L / 396 US gal
WATER CAPACITY	430 L / 114 US gal
ENGINES	2 x Volvo Penta D6 IPS 600 320 kW / 435 hp 3500 rpm 2 x Volvo Penta D6 IPS 650 353 kW / 480 hp 3800 rpm
MAX SPEED	27 kn - IPS 600 / 31 kn - IPS 650
CRUISING SPEED	20 kn - IPS 600 / 24 kn - IPS 650
CABINS	1/2
BATHROOMS	1 + 1
MAX PERSONS CAPACITY	12
DESIGN	Brunello Acampora / Victory Design Cav. Norberto Ferretti Solaris Power Design Team

57

SOLARIS POWER 57 FLYBRIDGE

ALL THE CHARACTERISTICS OF THE
57 LOBSTER, PLUS THE FLYBRIDGE
CONFIGURATION.

F
L
Y
B
R
I
D
G
E

57



SOLARISPOWER HEADQUARTER

Via Antonio Masetti, 30 - Forlì (FC) - Italy
T. +39 0543 807062 - info@solarispower.it
www.solarispower.com

AGENTS AND DISTRIBUTORS

PLEASE VISIT: WWW.SOLARISPOWER.COM/CONTACTS

DISCLAIMER AND COPYRIGHTS

Solaris Power Yachts reserves the right to change descriptions, modify, or substitute products in this catalogue without notice. Solaris is a registered trademark of Solaris

Yachts Srl, other names may be registered trademarks of their respective owners. Solaris Power © 2023. All rights reserved.

Rendering and illustrations: Victory Design
Photo: C. Borlenghi, A. Muscatello, E. Bianchi, M. Paradisi
Graphic design: DL&A Agency

