

solaris *power*

BUILT FOR SAILORS



SOLARIS POWER 57 LOBSTER

by NORBERTO FERRETTI

TECHNICAL SPECIFICATIONS

TECHNICAL SPECIFICATIONS

Model	Solaris Power 57 Lobster	
Design	Victory Design	Brunello Acampora
Project Leader	Norberto Ferretti	
Builder	Solaris Power	
CE Category	B	
Length overall	17,5 m	57'40" ft
Hull length	16,25 m	53'30" ft
Water line length	15,4 m	50'52" ft
Max beam	5,28 m	17'32" ft
Draft	1,29 m	4'23" ft
Unladen Displacement	23.000 kg	50706 Lbs
Laden Displacement	26.000 kg	57320 Lbs
Fuel tank	2.200 l	581 US gal
Water tank	600 l	159 US gal
People capacity	12	
Engines std	2 x Volvo Penta D6 IPS 800	441 kw / 600 hp@3000 rpm
Engines opt	2 x Volvo Penta D6 IPS 950	533 kw / 725 hp@2500 rpm
Max speed	30 kn (IPS800)	35 kn (IPS950)
Cruise speed	29 kn (IPS800)	26 kn (IPS950)

The new **SolarisPower 57** blends superior build materials with a design pedigree second to none, resulting in new levels of sea-keeping, performance and comfort at sea.

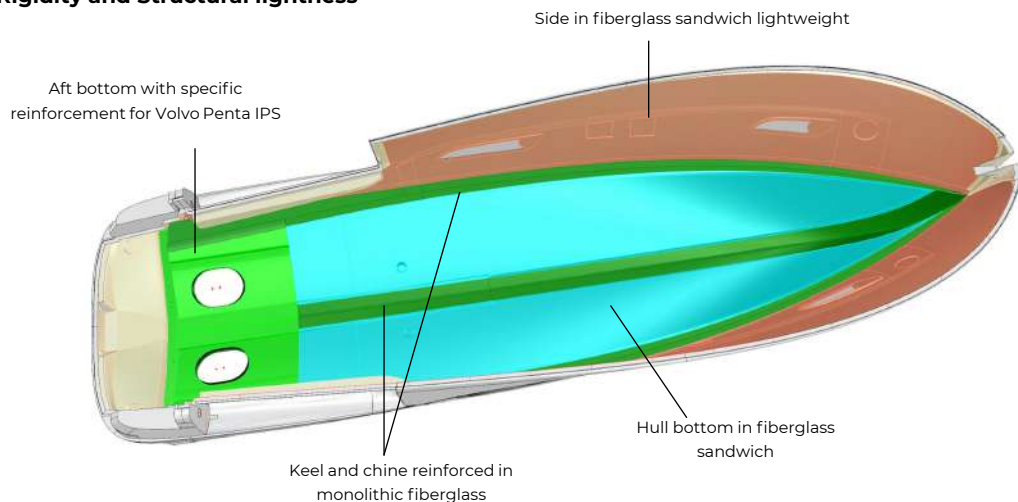


Solaris' motor-yachts enjoy the same exacting quality standards as the acclaimed Solaris sail range. The SolarisPower 57 is crafted in a modern production facility, skilled in the production of many prestigious motor-yachts from 50'-100' since 2008 and NOW it spends its know-how in the design of the SolarisPower 57

The **SolarisPower 57's walkaround decks** ensure crew **safety** and **confidence** in challenging weather.

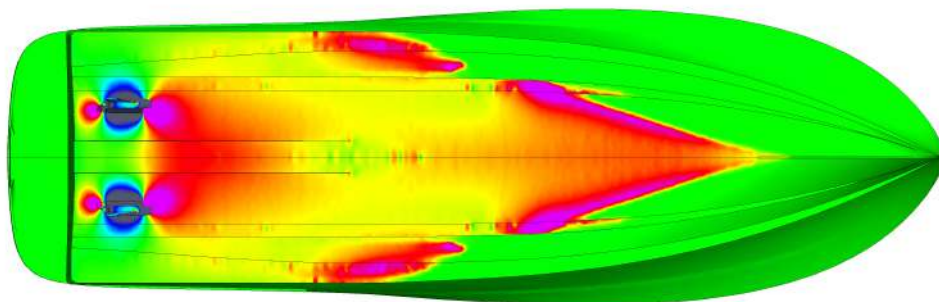
Safe and easy in any condition

Rigidity and Structural lightness



Computational Fluid Dynamics (CFD)

main feature for the design of Solaris Power hulls



Both **hull** and **deck** are moulded in **vinylester resins**, with hi-density PVC sandwich optimizing structural rigidity and thermal insulation.

The **57's Sundeck** is formed in hi-density PVC sandwich, using vinylester **infusion** and carbon mouldings.

The **bow and stern bulkheads** use hi-density PVC sandwich, infused with **carbon** and resin.



This attention to detail and pursuit of quality are the foundations of the SolarisPower 57.

Machinery: Twin **Volvo Penta IPS 800** in standard specification or Twin **Volvo Penta IPS 950** engines in optional configuration.



SolarisPower 57 has different **layouts**, to satisfy the wants of the most exacting of Owners

Kitchen main deck:

Induction hob,
Stainless sink,
Tap pop up,
Refrigerator 115 lt,
Combined oven

Kitchen lower deck:

Induction hob,
Stainless sink,
Tap pop up,
Refrigerator 194 lt,
Freezer 62 lt,
Combined oven
Dishwasher



SolarisPower 57 has different **interior layouts**,
to satisfy the wants of the most exacting of Owners



Owner's cabin
Wood: Oak std



Guest's cabin
Wood: Oak std

Each Owner may select from a broad range
of **superior quality bespoke**
fabrics and finishes,
individually crafted around
Brunello Acampora's matchless design flair.



Dinette:

Wood: Oak std



Oak (std)



Walnut (opt)



Main deck (lower deck kitchen)



Main deck (upper deck kitchen)



A cabin version
(lower deck kitchen)



B cabin version
(lower deck kitchen)



C cabin version
(main deck kitchen)



D cabin version
(main deck kitchen)



E cabin version
(main deck kitchen)

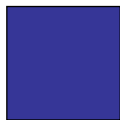
Customize your SolarisPower 57



Hull - Deck



Dark Grey



Navy blue



Turquoise



Monaco Red



Pearl white

Customize your SolarisPower 57



stern sunpad - bow sunpad - cockpit sofa

Sunbrella - Nattè

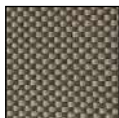
Silvertex



Oyster



White



Taupe Chalk



White

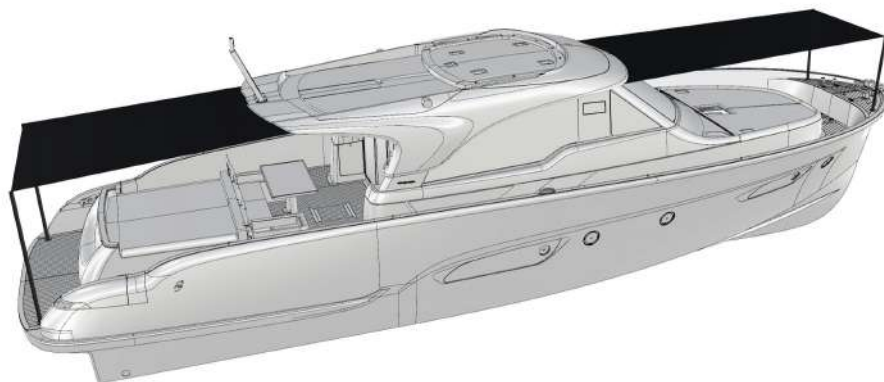


Cream



Alluminium

Customize your SolarisPower 57



- 1 - Bimini Bow : 2poles needed and rail on H.T (opt)
- 2 - Bimini Stern 2poles needed and rail on H.T (opt)

Parasol



White



Titanium
Look



Carbon
Look

STANDARD EQUIPMENT

Hull and Deck

Stainless steel deck equipment
Electric winch 2000 W windlass with telescopic hawse and remote control
Galvanized delta anchor kg. 32 and 75mt 10mm chain
Electric mooring winch winch 2000 W windlass
Teak bridge and stern platform
Platform bathing ladder extractable made by stainless steel and teak
Hydraulic gangway
Solid teak gunwale
Closing cockpit stays
Bow and stern sun bathing mattresses
Frontal and lateral deckhouse crystal glued windows
Acoustic alarm for water in stern and bow bilges
Midboat bollards (1 each side)
Fenders plugs
Antifouling paint
Stern steps courtesy lights
Fire extinguisher
Zinc anodes

Lounge

Stern stainless steel 3 panels sliding door
Dinette with fabric "U" sofa and extendable table
Furniture with shelf and kitchen cabinet
Light walnut essenza furniture
Light walnut wood floor
Two chairs next to the TV cabinet (lower deck kitchen version)
Radio stereo with Fusion MS-IP700 speakers
Sides curtains
Led lights
Vinyl panels ceiling
Fixed 32" TV mount
Courtesy lights in stair

Helm Console

Control station with complete instrumentation
Two seats pilot chair
Throttle lever - electric inverter with Joystick
12" Volvo Penta navigation display
Volvo Penta auto pilot
Rudder indicator
Echo sounder, log milometer and water temperature releuator with tridata DST 800 system
Fuel and water indicator
VHF Garmin 210i con DSC system
Compass
1/2 miles headlight
Windscreen wipers with windscreen washer included
Light walnut wood floor
Fire extinguisher

Cockpit

Lifejacket peak with line and light buoy
Speakers
Seabob and tender garage with hydraulic door
Mooring covers
Cockpit fresh water sink

Owner's cabin

Two wardrobes
Sides windows with two openable portlights
Reading lights
Double bed with mattress
Led lights
Sides high cabinets
Moquette floor
Two seats and table under starboard portlight
Vinyl covered ceiling
Mirror
Curtains

Guest's cabin

Bathroom access
Sides wardrobes with glove compartments (left and right)
Two wardrobes
Bed with storage base
Bedside tables
Sides windows with two openable portlights
Two reading lights
Double bed with mattress
Led lights
Fabric headboard
Vinyl covered ceiling
Moquette floor
Mirror
Curtains

Guest's bathroom and day

Bathroom accessories
Wardrobes and shelves
Detached shower with crystal door
Glass washbasin
Led lights
Openable portlight inside the shower cabin
Two doors in the corridor and one in the bow cabin
Mirror
Pleated curtain
Ceramic electric WC with control panel 3/4 full

Propulsion system and engine room

VOLVO PENTA IPS 800 (441 Kw / 600 Hp) engines with manual interceptor system
Electronic blowers (nr. 2)
Volvo toolbox
Hatch and stainless steel ladder
Boiler 220V 60 lt.
Automatic/manual fire extinguisher 12 kg.
Fuel filters water separator
Generator peak
Inspection lights
Bow watertight bulkhead
Gasoline tank
Diverter valve for emergency bilge output

Bow locker

Chain peak
Two 25mt mooring lines
Winch remote control
Inspection hatch
Fresh water shower for chain washing
Stainless steel bar for fendresses

Unmounted crew cabin

Bow cabin portlight
Access ladder
Planking
N. 2 storage shelves

Systems

Joystick docking assistance
Remote control for engines power shut-off
Fire extinguisher (one in each cabin)
Electric equipment composed by: Kohler generator 9000W - generator battery 60Ah 12V - engines battery set 180Ah 24V - auxiliary services battery set 210Ah 12V - battery charge 50Ah 24V - 24V illumination in cabins - Battery cut off switch - parallelo batterie meccanico ed elettrico
Black water output system with automatic electropump and 77 lt tank
Bilges output system with 4 electropumps (3 automatics)
Fresh water pump
VHF transceiver system
Lounge and lower deck entrance air conditioning system
Lounge and cockpit stereo system Fusion MS-IP700
Electric WC system with fresh water and black water tank
50A quay plugs
Cathodic protection with zinc anodes
Grey water output system with electropump and two 120 lt tanks. Tot. 240 lt

General Equipments

220 V quay cable
8 people Oceanus liferaft
Dishes for 8 people
Fendresses n. 6

STANDARD EQUIPMENT FOR ALL SUNTOP VERSIONS

Radar, signals and antenna mast
Flag pole
Acoustic alarm
Navigation lights
Sliding motorised roof

STANDARD EQUIPMENT FOR ALL FLYBRIDGE VERSIONS

Radar, signals and antenna mast
Flag pole
Acoustic alarm
Exit hatch from the salon
Navigation panel control
Autopilot
Instrumental panel with engines display
Electronic control lever with Joystick
Navigation lights
12" navigator display
Windscreen protection
Sunbathing
Stainless steel pulpits regolamentariStainless steel pulpits regolamentariStainless steel
pulpits regolamentariStainless steel pulpits regolamentariStainless steel pulpits
regolamentariStainless steel pulpits regolamentari
VHF repeater
Driver seat for two people

STANDARD EQUIPMENT FOR ALL LOWER DECK GALLEY VERSIONS

Miele 4 burners induction cooktop
Corian worktop
Miele electric oven 60 cm
Miele fridge and freezer lt. 280 + 60
Double stainless steel basin
Cooker hood over the cooktop
220V plugs
Led lights
Cabinets
Understair galley
Drawer and cabinet
Cutlery drawer
Extinguisher
Portlights nr. 2
Vinyl covered ceiling

STANDARD EQUIPMENT FOR ALL MAIN DECK GALLEY VERSIONS

Four burners induction cooktop
Corian worktop
90lt Vitrifrigo fridge
Foster electric oven
Stainless steel basin n. 1
Extinguisher

STANDARD EQUIPMENT (A) VERSION LOWER DECK GALLEY

Owner's cabin (see standard equipment)
Guest's cabin (see standard equipment)
Owner's bathroom (see standard equipment)
Guest's bathroom and day (see standard equipment)

STANDARD EQUIPMENT (B) VERSION LOWER DECK GALLEY

Owner's cabin (see standard equipment)
Guest's cabin
Wardrobe
Two bunk bed cabin with mattresses
Two "V" low beds with mattresses
Bedside tables
Led lights
One portlight each cabin
Owner's bathroom (see standard equipment)
Guest's bathroom and day (see standard equipment)

STANDARD EQUIPMENT (C) VERSION MAIN DECK GALLEY

Dinette lower deck
Owner's (see standard equipment)
Bow double cabin (see standard equipment)
Owner's bathroom (see standard equipment)
Guest bathroom and day (see standard equipment)

STANDARD EQUIPMENT (D) VERSION MAIN DECK GALLEY

Owner's cabin (see standard equipment)
Bow double room (see standard equipment)
Two "L" beds cabin
Owner's bathroom (see standard equipment)
Guest bathroom and day (see standard equipment)

STANDARD EQUIPMENT (E) VERSION MAIN DECK GALLEY

Owner's cabin (see standard equipment)
Two beds bow cabin
Two bunk beds bow cabin
Two single or one double bed in bow cabin
Owner's bathroom (see standard equipment)
Guest's bathroom and day (see standard equipment)



Solaris Power - Via A. Masetti, 30 - 47122 Forlì (FC) Italy - tel. +39 0543 807062

